

***Charcoal and  
Charcoal Briquette  
Production in the  
United States,  
1961***

U. S. DEPARTMENT OF AGRICULTURE. . . . . FOREST SERVICE  
DIVISION OF FOREST ECONOMICS AND MARKETING RESEARCH

FEBRUARY 1963

# **CHARCOAL AND CHARCOAL BRIQUETTE PRODUCTION IN THE UNITED STATES, 1961**

**U.S. Department of Agriculture  
Forest Service  
Division of Forest Economics  
and Marketing Research**

**February 1963**

## PREFACE

This report presents data on the quantities of charcoal<sup>1</sup> and charcoal briquettes produced in the United States during 1961; the principal markets for charcoal and charcoal briquettes; average selling prices; characteristics of charcoal kilns; plant capacity; the kind, quantity, and cost of materials consumed; and the location of manufacturing facilities. A similar report was published in 1957 under the title "Charcoal Production in the United States."

The survey, upon which this report was based, was conducted by the regional experiment stations of the Forest Service. Every effort was made to obtain through State Foresters, Extension Foresters, Service Foresters, County Agents, and other local sources of information a complete list of the charcoal producers in the United States in 1961. A mail canvass, with field followup of nonrespondents, was made of all producers on this list. The data in this report are thus based upon returns from essentially all-known charcoal producers with estimates for a few nonreporting plants.

---

<sup>1</sup>The term charcoal as used in this report refers only to the carbon material made from wood.

## CONTENTS

	Page
Charcoal and charcoal briquette production in the United States, 1961.....	1
Charcoal production shows substantial rise since the mid- 1950's.....	1
Domestic producers supply nearly all charcoal needs.....	2
98 percent of charcoal production in the East. Large producers account for most of charcoal output.....	2
Nearly 2,000 converting units in charcoal plants in 1961.....	2
Large amounts of excess capacity in all regions.....	4
Most charcoal converting units are small....	4
Over half the charcoal sold by charcoal producers goes to briquetting plants.....	4
Wide range in selling price of charcoal . . . . .	6
Roundwood composed most of the wood consumed in charcoal plants in 1961.....	6
Residues cheaper than roundwood.....	6
235,640 tons of charcoal briquettes produced in 1961.....	7
Jobbers purchased three fifths of the charcoal briquettes sold.....	7
61 percent of the charcoal used in briquetting produced in own plant.....	8
21,000 tons of briquettes produced from non-wood sources.....	8
Appendix A.....	9
Appendix B.....	17
List of charcoal producers.....	17
List of briquette producers.....	26
Appendix C.....	29
Map 1.....	30-31
Map 2.....	32-33



## CHARCOAL AND CHARCOAL BRIQUETTE PRODUCTION IN THE UNITED STATES, 1961

Charcoal Production Shows Substantial Rise Since the Mid-1950's

Charcoal production in the United States in 1961 amounted to 328,000 tons (table 1, fig. 1). This was 24 percent higher than production in 1956, the previous postwar peak year. It was also 42 percent above the 231,709 thousand tons reported by the Bureau of the Census for 1958. The Bureau of the Census estimate of production was based upon reports from only 129 plants--less than half of the plants believed to have been producing charcoal. However, the plants not covered by the Bureau of the Census were largely small family operations with no hired employees. Such plants probably accounted for only a small part of total production.

Although charcoal production in 1961 was considerably above the levels prevailing in the 1950's, it was still substantially below output in the early 1900's when charcoal was widely used in the iron and chemical industries and for cooking and heating in slum areas,

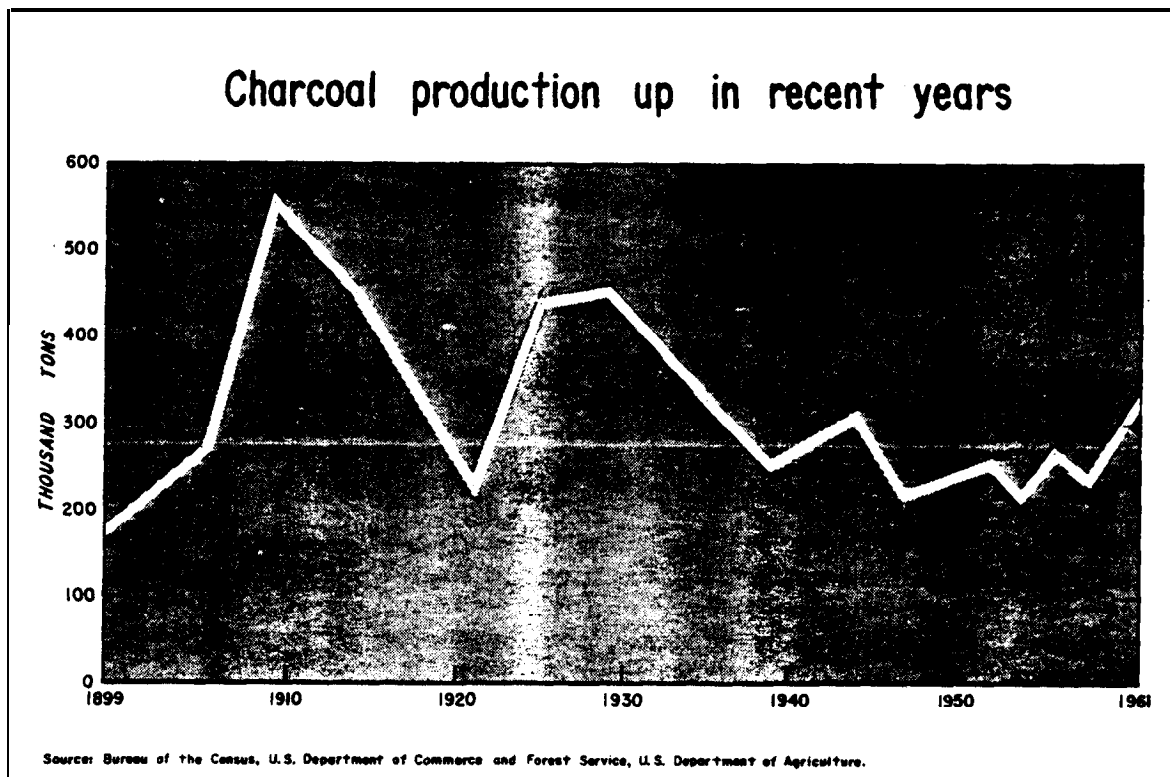


Figure 1

## **Domestic Producers Supply Nearly All Charcoal Needs**

In 1961 about 10,090 tons of charcoal were imported into the United States, largely from Ceylon and Mexico (table 2). Exports, mostly to Canada, amounted to 4,748 tons. Net imports were thus 5,342 tons--a relatively small part of total U.S. needs.

## **98 Percent of Charcoal Production In the East**

Charcoal production is concentrated in the East (table 3, fig. 2). In both 1956 and 1961, the plants located in this section produced 98 percent of all the charcoal manufactured.

In 1961 the Southern and Central regions with 29 percent and 26 percent, respectively, of total output were the two most important producing regions. In 1956, the Lake Region with 37 percent of total production and the Southern Region with 28 percent were the largest producing areas. Output increased in all regions, except the Lake Region, between 1956 and 1961. The rise was particularly rapid in the Central Region where production nearly tripled.

In 1961 there were 297 active charcoal producers--57 more than in 1956. As illustrated in the list of producers (page 17) and map 1, these were also concentrated in the East, although nearly 10 percent were in the West, mostly in California. The largest part of the increase in the number of charcoal producers between 1956 and 1961 was in the Southern and Central regions. A rather substantial decline occurred in the number of producers operating in the Northeast and in California.

## **Large Producers Account for Most of Charcoal Output**

In 1961, 13 large producers, each producing more than 5,000 tons of charcoal, accounted for 56 percent of total production (table 4, fig. 3). At the other extreme, 126 producers, who produced less than a hundred tons each, accounted for only about 1 percent of total output. About 40 percent of these small plants were located in the Southern Region.

## **Nearly 2,000 Converting Units in Charcoal Plants in 1961**

There were 1,977 converting units in charcoal plants in 1961 (table 5). These included 262 brick kilns, 805 concrete and masonry block kilns, 430 sheet steel (beehive type kilns) and 480 "other" units. The "other" units category includes retorts, ovens, and a wide variety of improvised chambers that have been adapted for charcoal production.

Ninety-four percent of all converting units were in the East. The Central Region with 595 units lead all others, followed by the Southeast Region with 444 and the Southern with 429.

## Charcoal production concentrated in the east

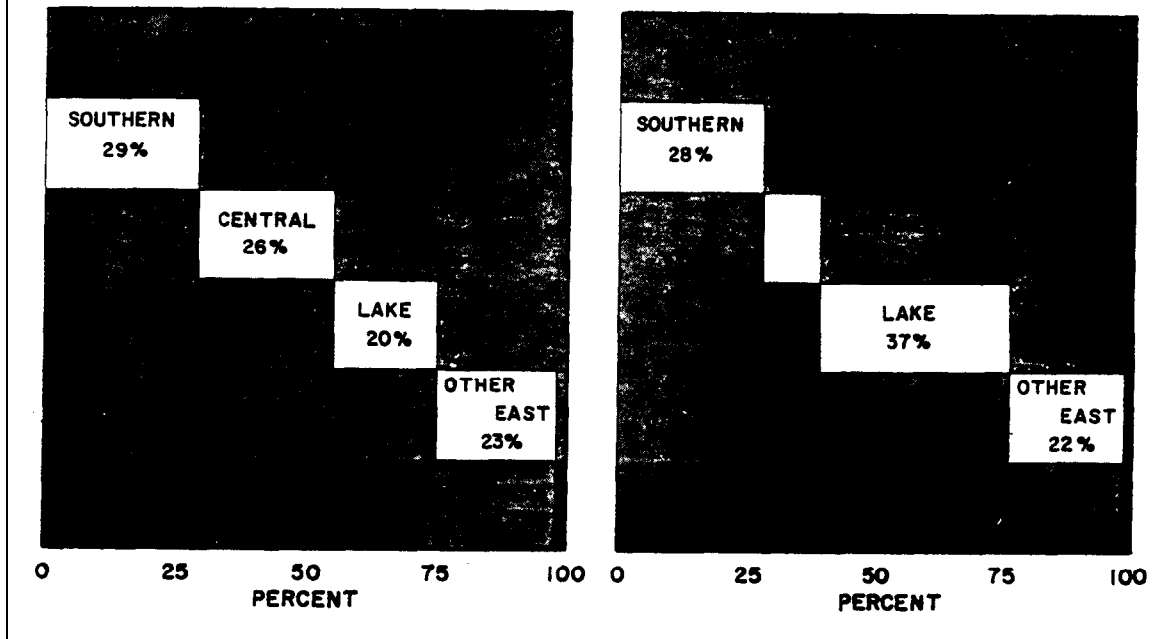


Figure 2

## 4 percent of charcoal producers account for 56 percent of production

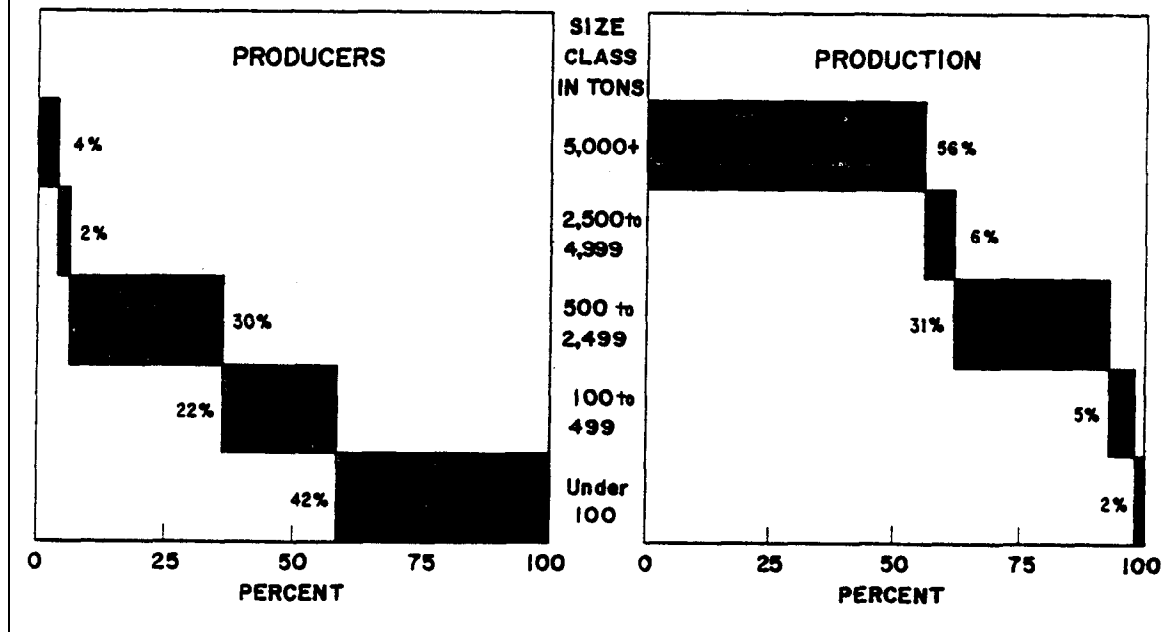


Figure 3

## **Large Amounts of Excess Capacity in All Regions**

The potential annual capacity, i.e., the quantity of charcoal that could be produced in a 310-day operating year, of all converting units in 1961 was 795,920 tons (table 5). This was about 2.4 times production. Part of the excess capacity, however, is in small plants that are intended to operate only during the peak periods of demand in the summer or during the off season for other employment.

About 40 percent of total capacity was in the Southern Region. Another 5 percent of capacity was in the West. The remaining 55 percent was about equally distributed among the Northeast, Southeast, Lake and Central regions.

About 55 percent of total capacity was in the "other" unit category, mostly in retorts and ovens. Another 27 percent was in concrete and masonry block kilns, 12 percent in brick kilns, and 6 percent in steel kilns.

Potential capacity was much larger than production in all regions (fig. 4). There was, however, considerable variation among regions. In the Lake and Central regions production was about two thirds of potential capacity. In contrast, less than a third of the capacity in the Southern Region was utilized.

## **Most Charcoal Converting Units Are Small**

Of the 1,977 converting units reported in 1961, 33 percent had a capacity of less than a ton of charcoal per carbonizing cycle. Another 26 percent had a capacity of from 1 to 5 tons, 36 percent from 6 to 25 tons, and 5 percent had a capacity more than 25 tons (table 6). Over half of all units with less than 1-ton capacity were in the Southeast Region. Most of the large units (over 25 tons) were in the Southern and Central regions.

## **Over Half the Charcoal Sold by Charcoal Producers Goes to Briquetting Plants**

Charcoal producers sold 177,360 tons of charcoal in 1961 (table 7, fig. 5). Of this total, 51 percent went to briquetting plants, 28 percent to jobbers, 18 percent to industrial users, and 3 percent to other miscellaneous purchasers.

Sales to briquetting plants were particularly large in the Central Region where they accounted for 64 percent of total sales. In the Northeast, on the other hand, nearly all of the charcoal sold went to jobbers and industrial users. Industrial sales, largely to chemical plants, were also important in the Southeast.

As illustrated in figure 5, sales to briquetting plants increased roughly 4 times between 1956 and 1961. In contrast, sales to industrial users were only about a third as high. Apparently charcoal is continuing to lose its metalurgical and chemical markets, with increased domestic use more than offsetting such losses.

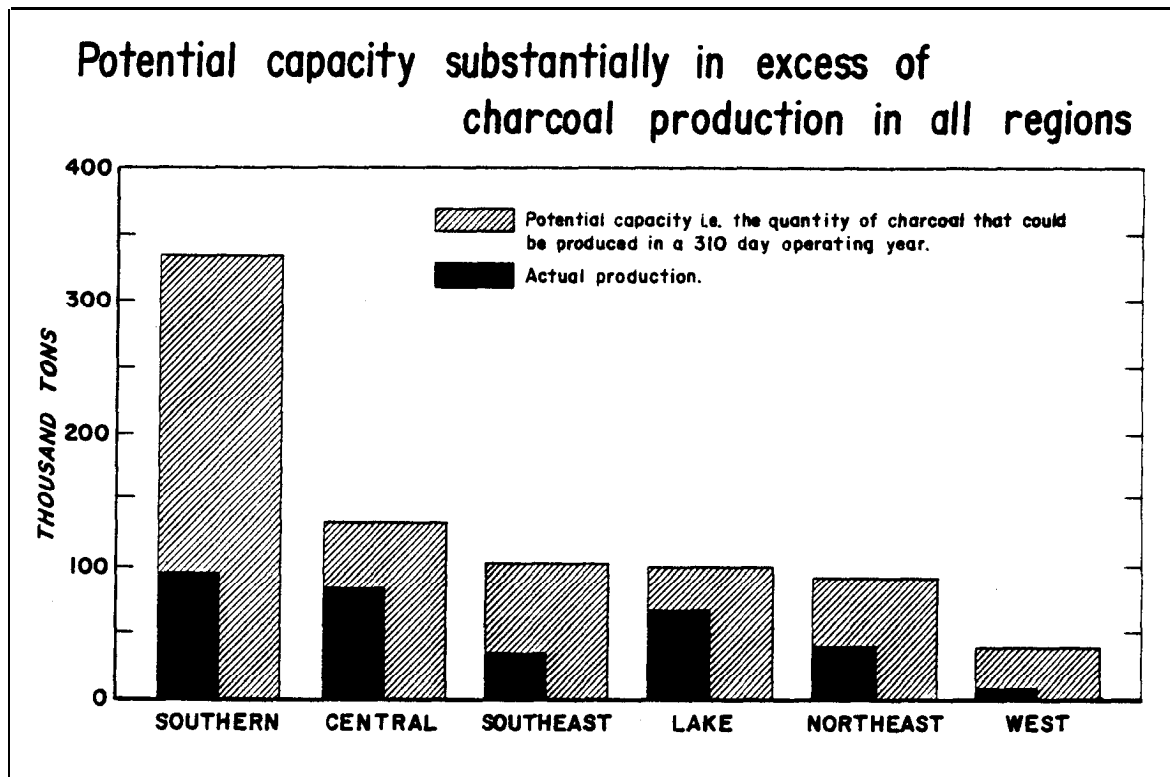


Figure 4

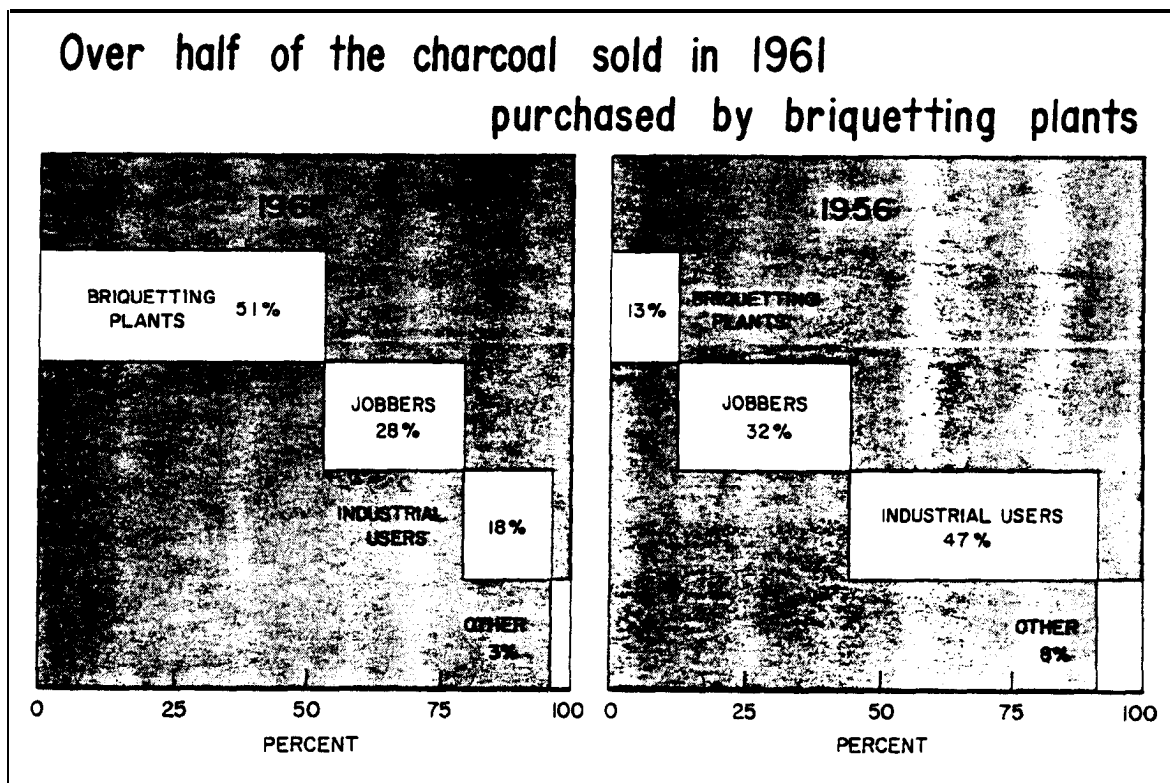


Figure 5

## Wide Range in Selling Price of Charcoal

As indicated in the following tabulation, the average selling price of unscreened charcoal in 1961 ranged from a low of about \$32 per ton in the Southeast to a high of \$64 in the Northeast.

<u>Region</u>	<u>Average price per ton</u>
Northeast.....	\$64
Southeast .....	32
Lake .....	40
Central.....	33
Southern.....	33
California .....	46

In most regions the selling price of screened lump was about \$15 per ton higher than unscreened.

Because of handling, packaging, and other associated costs, the average selling price of packaged charcoal was considerably higher than that sold on a bulk basis. It ranged between a low of about 3 cents per pound (\$60 per ton) in the Southeast and Central regions to 5.5 cents per pound (\$110 per ton) in the Northeast.

No production costs were obtained in this survey. There were reports, however, that the industry was highly competitive and that the profit margins of some producers in certain areas were small. Large and medium-sized plants with efficient equipment and marketing organizations apparently had a competitive advantage over small plants.

## Roundwood Composed Most of the Wood Consumed in Charcoal Plants in 1961

In 1961, about 509,000 cords of roundwood; the equivalent of 125,755 cords of slabs and edgings; and 13,650 cords of sawdust, shavings, and other fines; and 64,150 tons of pine stumps were consumed in charcoal plants (table 8).

Roundwood was used in all regions, with the heaviest use in the Central, Southern, and Lake regions. Slabs and edgings were utilized in all eastern regions. Pine stumps were used only in the Southeast.

## Residues Cheaper than Roundwood

The average delivered price of roundwood in 1961 was \$10.10 a cord--about 40 percent above the average of \$7.30 for slabs and edgings and more than 5 times the average of \$1.80 paid for sawdust, shavings and other fines (table 8).

Average delivered prices of both roundwood and slabs and edgings varied considerably among regions. The average for roundwood, for example, ranged from \$6.60 per cord in the "Other West" to \$13.20 in the Lake Region. The average delivered price of slabs and edgings ranged from \$4.40 per cord in the Southeast to \$8.90 in the Southern Region.

On the average, a little over 2 cords of wood are required to produce a ton of charcoal. Average wood costs per ton thus ranged from about \$15.00 for slabs and edgings to more than \$20.00 for roundwood. These costs represented a substantial part of the prices received per ton of charcoal sold in bulk.

### 235,640 Tons of Charcoal Briquettes Produced in 1961

In 1961, 50 plants produced 235,640 tons of charcoal briquettes (table 9, fig. 6). Forty-four of the plants and 97 percent of the production was in the East, largely in the Southern, Lake, and Central regions (see list of producers page 26 and map 2).

### Jobbers Purchased Three Fifths of the Charcoal Briquettes Sold

Sales of charcoal briquettes were 232,090 tons in 1961 (table 10). of this total about 58 percent was sold to jobbers, 30 percent to chain stores, and 12 percent to other miscellaneous purchasers. Sales to jobbers were particularly large in the Southern and Lake regions.

There are no data on the consumption of charcoal briquettes by end use. Presumably, however, nearly all of the briquettes sold to jobbers and chain stores were consumed in domestic uses.

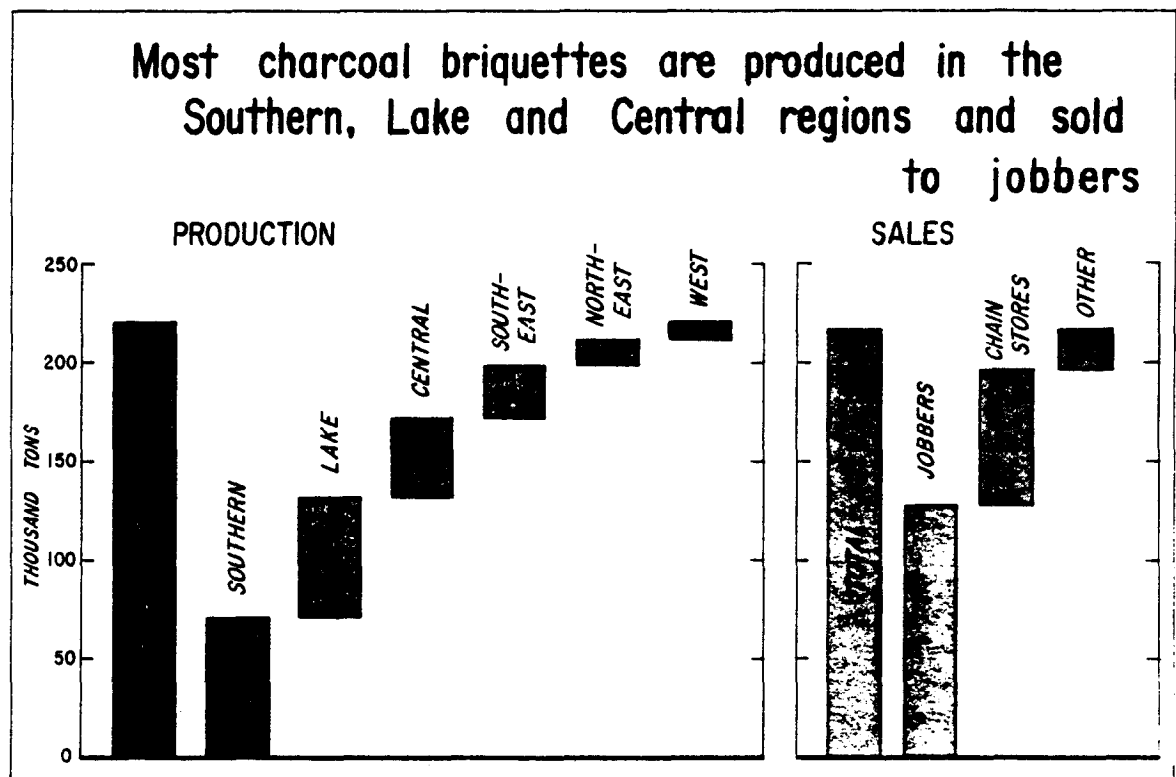


Figure 6

The weighted average selling price of charcoal briquettes sold in bags ranged from a low of about 4 cents per pound to a high of about 4.6 cents.

### **61 percent of the Charcoal Used in Briquetting Produced in Own Plant**

Of the 226, 880 tons of charcoal used in briquetting in 1961, about 61 percent was produced in charcoal plants owned or controlled by the briquetting plant (table 11). The remaining 39 percent, some 88,610 tons, was purchased from independent producers. There was considerable variation in the sources of charcoal among regions. Most of the charcoal briquetted in the Northeast, Lake, and Southern regions was produced by the briquetting plant. On the other hand, most of the charcoal briquetted in the Central Region came from independent suppliers.

The average price paid for charcoal purchased from independent suppliers in the East ranged from \$34.40 per ton in the Southern Region to \$41.70 per ton in the Lake Region. The average for the United States was \$35.50.

### **21,000 Tons of Briquettes Produced From Nonwood Sources**

There were four plants making briquettes from nonwood materials, such as lignite and agricultural residues, in 1961. These plants produced about 21,000 tons of briquettes. Total briquette production in the United States in 1961 thus amounted to 256,640 tons with charcoal briquettes produced from wood accounting for 92 percent of the total.

**APPENDIX A**

**TABLE 1.**--Charcoal production in the United States, selected years, 1899-1961

Year	Production	Year	Production
	<u>Tons</u>		<u>Tons</u>
1899.....	171,543	1939.....	250,780
1905.....	266,701	1944.....	306,192
1909.....	554,785	1947.....	213,660
1914.....	448,278	1952.....	251,784
1921.....	227,033	1954.....	214,481
1925.....	438,358	1955.....	237,770
1929.....	453,550	1956.....	264,990
1935.....	328,014	1958.....	231,709
		1961.....	328,000

Source : 1955, 1956, and 1961, Forest Service, U.S. Department of Agriculture. All other years Bureau of the Census, U.S. Department of Commerce.

**TABLE 2.** --Imports and exports of charcoal in the United States, 1952-61

Year	Imports	Exports
	<u>Tons</u>	<u>Tons</u>
1952.....	3,290	(1)
1953.....	3,328	(1)
1954.....	5,806	(1)
1955.....	6,521	21,665
1956.....	13,522	(1)
1957.....	13,082	2,486
1958.....	7,202	2,380
1959.....	11,338	2,891
1960.....	11,471	4,038
1961.....	10,090	4,748

<sup>1</sup> Not available.

**Source:** Bureau of the Census, U. S. Department of Commerce. U. S. Imports of Merchandise for Consumption and U. S. Exports of Domestic and Foreign Merchandise. Annual reports.

**TABLE 3.** --Number of active producers and charcoal production in the United States, by region, 1956 and 1961

Region	1956		1961	
	Producers	Production	Reducers	Production
	<u>Number</u>	<u>Tons</u>	<u>Number</u>	<u>Tons</u>
Northeast.....	65	32,000	48	39,150
Southeast.....	46	26,890	45	34,570
Lake.....	12	96,830	15	67,120
Central.....	42	29,230	71	84,420
Southern.....	29	74,260	91	95,410
California.....	39	4,650	20	5,410
Other West.....	7	1,130	7	1,920
Total.....	240	264,990	297	328,000

Source ; Forest Service, U. S. Department of Agriculture.

**TABLE 4.** --Number of active producers and charcoal production in the United States, by production size class and region, 1961

Region	Production size class											
	Total		Under 100 tons		100 to 499 tons		500 to 2,499 tons		2,500 to 4,999 tons		5,000 tons and over	
	Pro-ducers	Pro-duction	Pro-ducers	Pro-duction	Pro-ducers	Pro-duction	Pro-ducers	Pro-duction	Pro-ducers	Pro-duction	Pro-ducers	Pro-duction
Northeast . . . . .	Number 48	Tons 39,150	Number 20	Tons 350	Number 11	Tons 2,340	Number 13	Tons 16,520	Number ( <sup>1</sup> )	Tons ( <sup>1</sup> )	Number ( <sup>1</sup> )	Tons ( <sup>1</sup> )
southeast. . . . .	45	34,570	18	430	14	3,060	12	16,210	--	--	( <sup>1</sup> )	( <sup>1</sup> )
Lake . . . . .	15	67,120	8	300	--	--	4	5,510	( <sup>1</sup> )	( <sup>1</sup> )	( <sup>1</sup> )	( <sup>1</sup> )
Central . . . . .	71	84,420	13	570	22	8,240	30	33,940	( <sup>1</sup> )	( <sup>1</sup> )	4	34,670
Southern . . . . .	91	95,410	51	2,270	10	2,160	25	24,170	( <sup>1</sup> )	( <sup>1</sup> )	4	63,310
California . . . . .	20	5,410	13	530	5	1,650	( <sup>1</sup> )	( <sup>1</sup> )	--	--	--	--
Other West . . . . .	7	1,920	3	90	( <sup>1</sup> )	( <sup>1</sup> )	( <sup>1</sup> )	( <sup>1</sup> )	--	--	--	--
Total . . . . .	297	328,000	126	4,540	64	17,650	88	101,210	6	21,010	13	183,590

<sup>1</sup> Withheld to avoid disclosing figures for individual producers.

Source: Forest Service, U.S. Department of Agriculture.

**TABLE 5.** --Number of charcoal converting units and potential annual capacity<sup>1</sup> in the United States, by type of unit and region, 1961

Region	Total converting units		Brick		Concrete and masonry block		Steel (beehive)		Other	
	units	Potential capacity	Kilns	Potential capacity	Kilns	Potential capacity	Kilns	Potential capacity	units	Potential capacity
		Tons		Tons		Tons		Tons		
Northeast .....	Number 294	91,310	Number 36	17,580	Number 50	12,700	Number 165	20,880	Number 43	Tons 40,150
Southeast .....	444	102,770	28	10,470	34	17,170	108	18,250	274	56,880
Lake .....	93	100,050	11	11,240	45	11,370	4	310	33	77,130
Central .....	595	131,260	102	33,080	350	90,020	129	5,560	14	2,600
Southern .....	429	332,930	50	13,010	264	68,540	13	3,450	102	247,930
California .....	103	22,650	21	6,560	62	14,190	11	970	9	930
Other West .....	19	14,950	14	4,460	--	--	--	--	5	10,490
Total .....	1,977	795,920	262	96,400	805	213,990	430	49,420	480	436,110

<sup>1</sup> Potential annual capacity is defined as the quantity of charcoal that could be produced in a 310-day operating year.

Source: Forest Service, U. S. Department of Agriculture.

**TABLE 6.** --Number of charcoal converting units in the United States, by size class and region, 1961

Region	Total converting units	Size class (charcoal per carbonizing cycle)			
		Under 1 ton	1 to 5 tons	6 to 25 tons	Over 25 tons
	<u>Number</u>	<u>Number</u>	<u>Number</u>	<u>Number</u>	<u>Number</u>
Northeast.....	294	142	101	44	7
southeast.....	444	353	24	58	9
Lake.....	93	4	56	22	11
central.....	595	131	58	384	22
Southern.....	429	17	242	122	48
California.....	103	--	37	66	--
Other West.....	19	--	9	10	--
Total.....	1,977	647	527	706	97

Source : Forest Service, U.S. Department of Agriculture.

**TABLE 7.** --Charcoal sold in the United States, by type of purchaser and region. 1961

Region	Total	Type of purchaser						
		Jobbers	Industrial users				Briquetting plants	Other
			Total	Metal	Chemical	Other		
	<u>Tons</u>	<u>Tons</u>	<u>Tons</u>	<u>Tons</u>	<u>Tons</u>	<u>Tons</u>	<u>Tons</u>	<u>Tons</u>
Northeast..	20,450	9,830	8,840	3,900	3,580	1,360	1,260	520
Southeast..	22,470	510	11,400	3,690	7,710	--	10,430	130
Lake.....	12,180	3,860	1,400	210	1,170	20	6,910	10
Central....	74,550	10,980	5,830	3,620	310	1,900	57,660	80
Southern...	42,910	21,730	4,280	770	3,460	50	12,700	4,200
California.	3,980	2,950	--	--	--	--	750	280
Other West.	820	640	50	30	--	20	60	70
Total....	177,360	50,500	31,800	12,220	16,230	3,350	89,770	5,290

Source : Forest Service, U.S. Department of Agriculture.

**TABLE 8.--Quantity and weighted average delivered price of wood materials consumed in charcoal production in the United States, by kind of material and region, 1961**

Region	Roundwood		Slabs and edgings		Sawdust, shavings, and other fines		Pine stumps	
	Cords	Average price	Cords	Average price	cords	Average price	Tons	Average price
	<u>Number</u>	<u>Dollars</u>	<u>Number</u>	<u>Dollars</u>	<u>Number</u>	<u>Dollars</u>	<u>Number</u>	<u>Dollars</u>
Northeast .....	34,750	11.90	22,995	8.20	--	--	--	--
Southeast .....	21,900	9.10	15,690	4.40	12,980	1.90	64,150	11.10
Lake .....	131,180	13.20	34,000	7.30	--	--	--	--
Central .....	172,520	7.10	20,930	6.00	--	--	--	--
Southern .....	137,230	10.40	32,140	8.90	--	--	--	--
California .....	10,110	13.10	--	--	--	--	--	--
Other West .....	1,310	6.60	--	--	670	.75	--	--
Total .....	509,000	10.10	125,755	7.30	13,650	1.80	64,150	11.10

Source: Forest Service, U.S. Department of Agriculture.

**TABLE 9.** --Number of active producers and charcoal briquette production in the United States, by region, 1961

Region	Producers	Production
	<u>Number</u>	<u>Tons</u>
Northeast.....	5	14,640
Southeast.....	8	25,870
Lake.....	4	61,090
Central.....	7	55,750
Southern.....	20	70,350
California.....	( <sup>1</sup> )	( <sup>1</sup> )
Other West.....	( <sup>1</sup> )	( <sup>1</sup> )
Total.....	50	235,640

<sup>1</sup> Withheld to avoid disclosing figures for individual producers.

Source: Forest Service, U.S. Department of Agriculture.

**TABLE 10.** --Charcoal briquettes sold in the United States, by type of purchaser and region, 1961

Region	Total	Jobbers	Chain stores	Other
	<u>Tons</u>	<u>Tons</u>	<u>Tons</u>	<u>Tons</u>
Northeast.....	13,710	7,400	3,840	2,470
Southeast.....	60,880	7,800	13,490	3,340
Lake.....	24,630	40,890	15,960	4,030
Central.....	55,030	23,660	18,160	13,210
Southern.....	69,980	48,680	17,240	4,060
California.....	3,660	3,110	50	500
Other West.....	4,200	4,200	--	--
Total.....	232,090	135,740	68,740	27,610

Source: Forest Service, U.S. Department of Agriculture.

**TABLE 11.** --Source of charcoal used in briquetting plants, and weighted average delivered price of charcoal purchased in the United States, by region, 1961

Region	Source of charcoal used in briquetting			Average price per ton of charcoal purchased from other suppliers
	Total	Produced in own plant	Purchased from other suppliers	
	<u>Tons</u>	<u>Tons</u>	<u>Tons</u>	<u>Dollars</u>
Northeast.....	14,700	12,500	2,200	40.50
Southeast.....	23,520	10,180	13,340	34.60
Lake.....	57,900	50,870	7,030	41.70
Central.....	53,420	1,430	51,990	34.50
Southern.....	68,830	58,990	9,840	34.40
California.....	4,310	1,200	3,110	44.00
Other West.....	4,200	3,100	1,100	32.00
Total.....	226,880	138,270	88,610	35.50

Source : Forest Service, U.S. Department of Agriculture.

APPENDIX B

**CHARCOAL PRODUCERS IN THE UNITED STATES, 1961**

(This list may not include all producers and is subject to change as plants are sold or moved and as new plants are constructed).

<u>State, name, and producer No.</u>	<u>Post office address<sup>1</sup></u>
<b>NORTHEAST</b>	
Connecticut:	
1. Connecticut Charcoal Co., The.....	P. O. Box 195, Stafford Springs (Union)
2. Connecticut State Park & Forest Commission .....	650 Main Street, Hartford (Cobalt)
3. Dondero, Marco .....	P. O. Box 103, Haddam
4. Hadfield, Myron .....	R. D., Moosup (Sterling)
5. Oslander, August J. ....	Durham Road, Madison
6. Park, B. Ripley <sup>2</sup> .....	North Stonington
7. White Memorial Foundation, The <sup>3</sup> .....	Litchfield
Maine:	
8. Amherst Lumber Co. <sup>3</sup> .....	Amherst
9. Biron, Sylva <sup>3</sup> .....	West Paris
10. Gilley, M. H. Sr. & Son.....	Coopers Mills
Maryland:	
11. Eastern Shore Wood Products Co. ....	Box 97, Princess Anne
12. Eppler Wood Products Corp. <sup>3</sup> .....	P. O. Box 12, Dorsey
13. Maryland Department of Forests & Parks .....	State Office Building, Annapolis (Brandywine)
Massachusetts:	
14. Ambler Lumber Co. ....	Box 93, Bellingham
15. Curtis Lumber Co. <sup>3</sup> .....	Old Princeton Road, Hubbardston
16. Howard Bros. Charcoal Co. ....	Star Route, Montague (North Leverette)
17. New England Carbon Co., Inc. ....	P. O. Box 188, Pittsfield (Hancock)
New Hampshire:	
18. Fenton, Paul J., Jr. <sup>3</sup> .....	R.D. #1, Andover
19. Frink, Richard S. <sup>3</sup> .....	R.D. #1, Goffstown (Dunbarton)
20. Kimball, Donald S. <sup>3</sup> .....	Thousand Acres, West Franklin
21. New England Forest Industries, Inc. <sup>3</sup> .	3 N. State Street, Concord (Boscawen)
22. New Hampshire Forestry & Recrea- tion Commission .....	Concord (Allenstown)
23. White Mountain Charcoal Co. ....	West Rumney
New Jersey:	
24. Payne, Herbert W. & Sons.....	Box 57, Lacey Road, Whiting

See footnotes page 25.

State, name, and producer No.

Post office address<sup>1</sup>

**NORTHEAST (continued)**

New York:

25. B & C Charcoal Co. ....	Peck Hill Road, South Ostelic
26. Chiloway Charcoal, Inc. ....	Roscoe (Horton)
27. Duell, A. C. & Sons <sup>3</sup> .....	R.D. #1, Oswego
28. East Walden Charcoal Co. <sup>3</sup> .....	East Walden
29. Emerson Fuel Co., Inc. ....	545 Lyell Avenue, McConnellsville
30. Flower City Charcoal Co. ....	135 Calvin Street, Rochester 11
31. Glowell Charcoal. ....	Hampton Road, Marlboro (West Marlboro)
32. Heartwood Products Co. ....	Box HH, Tupper Lake
33. Hutton, William <sup>3</sup> .....	Booneville (McKeever)
34. Keil Charcoal Co., Inc. ....	135-149 Colvin Street, Rochester 11 (Dolgeville)
35. Northeastern Products Co. <sup>3</sup> .....	Warrensburg
36. Potsdam Charcoal Co., Inc. ....	Box 87, Potsdam
37. Reynolds Lumber Co. ....	Wells
38. Slawson Lumber Co., Inc. ....	Hunt
39. Smiley Bros. <sup>3</sup> .....	Mohonk Lake
40. Thomas, Fenimore .....	Star Route #2, Oswego
41. Timberland Products Co., Inc. ....	Stamford
42. Weinheimer, Arthur J. ....	R.D. #1, Old Chatham
43. Wicks, Verne A. ....	Harrisville

Pennsylvania:

44. Bradford Wood Products Co. ....	Box 194, Bradford (Marvindale)
45. Cedar Ledge Charcoal, Inc. ....	R.D. #2, Canton
46. Charcoal Products Co. ....	75 Woodlawn Drive, Dallas
47. Cologie, Ronald T. <sup>3</sup> .....	c/o E. Greenfield, Greeley
48. Humphrey Charcoal Corp. <sup>2</sup> .....	P. O. Box 45, Brookville (Fort Barnett)
49. Indian Hill Charcoal Co. <sup>2</sup> .....	Laceyville
50. Kohl, Elmer .....	R.D. #1, Bowmansville
51. Otto Chemical Co. ....	Sergeant
52. Susquehanna Chemical Corp. ....	Box 176, Bradford (Custer City)
53. Valley Chemical Co. ....	Morris
54. Wyman Chemical Co. ....	P. O. Box 194, Bradford (Port Allegany)

Rhode Island:

55. Hall, Edwin N. <sup>3</sup> .....	R.D. #1, Foster
56. James Peckham Charcoal .....	R.D. #2, Snake Hill Road, North Scituate (Foster)
57. Miner, Layton H. & Sons .....	R.D. #2, Westerly
58. Wisniewski, Stephen A. <sup>3</sup> .....	119 S. Main Street, Moosup (Foster)

West Virginia:

59. Bland, D.E. & Sons .....	Thomas
60. E. C. Grimm Lumber Mfg. Co. ....	Terra Alta
61. Hardwood Products .....	Marlinton
62. Hughes Smokeless Co. ....	#1 Broadway, N. Y., N. Y. (Belington)
63. Kingsford Chemical Co. ....	Parsons
64. Roseville Charcoal & Mfg. Co. <sup>2</sup> .....	Box 1188, Zanesville, Ohio (Bentree and Swiss)
65. Sanders, Roy K., & Sons <sup>3</sup> .....	Rowlesburg (Macomber)
66. Smith Lumber Co. ....	Livingston Avenue, Elkins (Macomber)

See footnotes page 25.

State, name, and producer No.

Post office address<sup>1</sup>

SOUTHEAST

Florida:

- |  |                            |
|--|----------------------------|
| 67. Black Diamond Charcoal.....                                | Bayard                     |
| 68. Industrial Carbon Division, Cabot Corp. <sup>2</sup> ..... | P. O. Box 137, Gainesville |
| 69. Pioneer Charcoal Co. <sup>2</sup> .....                    | Box 777, Dunnellon         |
| 70. Southern Pine Extract Co. ....                             | Cross City                 |

Georgia:

- |  |                                      |
|--|--------------------------------------|
| 71. Griffin, Marion .....                      | 122 Walker, Augusta                  |
| 72. Moore, Arthur .....                        | Horton Drive, Augusta                |
| 73. Rome Charcoal Co., Inc. <sup>2</sup> ..... | P. O. Box 2233, W. 14th Street, Rome |

North Carolina:

- |   |                                    |
|---|------------------------------------|
| 74. Alexander, Robert .....             | Black Mountain                     |
| 75. Bladen Lakes State Forest .....     | Elizabethtown                      |
| 76. Blue Ridge Charcoal.....            | c/o Lat Westall, R.D., Spruce Pine |
| 77. Boger, Nelson.....                  | Graham                             |
| 78. Bordeaux, William.....              | Garland                            |
| 79. Cody, Clyde.....                    | Carthage                           |
| 80. Gallimore, A. A. ....               | 1120 Graham Street, Burlington     |
| 81. Gallimore, Ernest .....             | Box 185, Denton                    |
| 82. Howell, George .....                | Route #2, Cherryville              |
| 83. Howell, John F.....                 | Route #1, Cherryville              |
| 84. McIntyre, J. C. & R. L. ....        | R.D., Old Fort                     |
| 85. Nall, L. W. ....                    | Carthage                           |
| 86. Peterson & Pittman.....             | Route #1, Bakersville              |
| 87. Roach, Arthur R.....                | Troy                               |
| 88. Roberts, Roy .....                  | Walnut                             |
| 89. Rome Charcoal Corp. ....            | Colon                              |
| 90. Spruce Pine Charcoal. ....          | R.D., Spruce Pine                  |
| 91. Virginia-Carolina Lumber Corp. .... | Box 616, Warrenton                 |
| 92. Wall, Auburn .....                  | Carthage                           |
| 93. Williamston Charcoal Co. ....       | Box 586, Williamston               |
| 94. Williford, J. A. ....               | Route #3, Windsor                  |
| 95. Yaw, E. O.....                      | Seagrove                           |

South Carolina:

- |   |                          |
|---|--------------------------|
| 96. Dargan Lumber Mfg. Co.....                  | Conway                   |
| 97. Geiger, Hayward.....                        | Route #1, Box 72 B, Irmo |
| 98. T. S. Ragsdale Co., Inc. <sup>2</sup> ..... | P. O. BOX 38, Lake City  |

Virginia:

- |  |                               |
|--|-------------------------------|
| 99. Big "M" Charcoal Co..... <sup>2</sup>      | Box 106, Farmville            |
| 100. Larus & Bros. Co., Inc. .... <sup>2</sup> | 22nd & Cary Streets, Richmond |
| 101. Long Bros. ....                           | Branchville                   |
| 102. Moody, Lewis W.....                       | 301 High Street, South Hill   |
| 103. Northside Lumber Co., Inc. ....           | P. O. Drawer CF, Williamsburg |
| 104. P. R. McGuire Lumber Co.....              | Wylliesburg                   |
| 105. R. K. Lafoon Charcoal Co. ....            | Kenbridge                     |
| 106. Roberts, A. F.....                        | Kenbridge                     |
| 107. Rudder, R. O., Jr.....                    | Brookneal                     |
| 108. Saluda Lumber Co.....                     | P. O. Box 205, Saluda         |
| 109. Seward Lumber Co., Inc.....               | Box 33, Clarement             |
| 110. Smith, Willie .....                       | Route #4, Salem               |
| 111. Virginia Briquet Co., Inc.....            | Woodford                      |

See footnotes, page 25.

State, name, and producer No.

Post office address<sup>1</sup>

**LAKE**

Michigan:

- 112. Cliffs Dow Chemical Co.<sup>2</sup> ..... Wright Street, Marquette
- 113. Duke Tree Farms..... Route # 1, Manistique
- 114. Kingsford Chemical Co.<sup>2</sup> ..... Iron Mountain (Kingsford)

Minnesota:

- 115. Benson, Wallace..... Isle
- 116. Halgrimson, Albert..... Route # 1, Palisade
- 117. Rum River Charcoal Co.<sup>2</sup> ..... Isanti
- 118. West Alaska Mill..... Leonard

Wisconsin:

- 119. Badger State Charcoal Co. .... P. O. Box 281, Black River Falls
- 120. Boerner Charcoal Plant..... Route #2, Wisconsin Dells (Adams)
- 121. Durand Charcoal Co., Inc..... Durand
- 122. Gersmehl, Edward A. .... 916 N. 7th Street, Sheboygan
- 123. Grotenhuis Bros..... Cedar Grove
- 124. Harrisville Charcoal Co. .... Westfield
- 125. Surbaugh, John..... Star Route, Frederic
- 126. Van Ert Forest Products ..... Route #2, Wisconsin Dells

**CENTRAL**

Illinois:

- 127. Ace Charcoal Producers, Inc. .... 4548 Shaw Avenue, St. Louis, MO.  
(Campbell Hill)
- 128. B. E. Moses Charcoal Co. .... Route #1, Cypress (Oberta Switch)
- 129. Berger Bros., Inc. .... 1176 N. Cherry Avenue, Chicago  
(Belknap)
- 130. Metcalf Charcoal Co..... Mt. Vernon
- 131. Murphysboro Charcoal Co..... P. O. Box 453, Murphysboro
- 132. Rock River Sawmill..... E. Main Street, Rockton
- 133. Scheck, Joe ..... Route #3, Princeton (DePue)
- 134. Timberland Charcoal Co..... Route #7, Mulford Road, R o c k f o r d  
(Boone Co.)

Indiana:

- 135. Hope Lumber Co..... P. O. Box 21, Hope

Kentucky:

- 136. Kingsford Co..... P. O. Box 1033, Louisville (Haldeman &  
Haywood)
- 137. West Kentucky Charcoal Co. .... Route #1, LaCenter (Bandana)

Missouri:

- 138. Allied Charcoal Co..... Lesterville
- 139. Barnhart Charcoal Co. .... Meta
- 140. Berhorst, Ben..... Freeburg
- 141. Black River Charcoal Co. .... Lesterville
- 142. Carty, Earl<sup>4</sup> ..... Salem

See footnotes page 25.

State, name, and producer No.

Post office address<sup>1</sup>

**CENTRAL (continued)**

Missouri (con't.):

143. C. E. Jenkins Coal & Charcoal Co.....	318 E. Miller Street, Jefferson City (Centertown)
144. Cobb-Eiceman Products Co.....	Zalma
145. Copeland Charcoal Co.....	Reynolds
146. Craig Charcoal Co. ....	Summersville
147. Cupples Co. <sup>2</sup> .....	7800 Bonhomme, St. Louis (Salem)
148. Dailey & Robertson Charcoal Co.....	Winona
149. Day, R. C. ....	Bradleyville
150. Fordell Development Co., Inc.....	Wesco (Cooks Station)
151. Gainesville Charcoal Co.....	c/o J. R. Evans, Gainesville
152. Greer Spring Co..... <sup>4</sup> .....	20 Brentmoor, St. Louis (Alton)
153. Hardwood Charcoal Co. <sup>4</sup> .....	Steeleville
154. Hellmuth, George <sup>4</sup> .....	Round Spring
155. Henley Charcoal Co.....	Meta (Henley)
156. H&F Charcoal Co.....	Salem
157. Hobson Charcoal Co. <sup>4</sup> .....	Salem
158. Huffman, Alva <sup>4</sup> .....	Rolla
159. Iberia Charcoal Co.....	Meta (Iberia)
160. James & Terry Charcoal Co. ....	Vienna
161. J&M Charcoal <sup>2</sup> Co.....	Meta
162. Kingsford Co. ....	P. O. Box 1033, Louisville, Ky. (High Gate)
163. Langworthy Charcoal Co. ....	320 Orchard Street, Salem
164. Lennox Charcoal Co. ....	Hobson Star Route, Rolla
165. Luecke Charcoal Co. ....	Rich Fountain (Westphalia)
166. Mackie, Roy A. <sup>4</sup> .....	Salem
167. McDonald Charcoal Co. ....	Dwight Bldg., Kansas City (Argyle)
168. Meadows, Clifford .....	Branson
169. Morlen, Ray.....	P. O. Box 37, Ellsinore
170. Neosho Charcoal Products Co. ....	Route #4, Neosho
171. Noblett, Gene.....	Belle (Koenig)
172. P&C Charcoal Co.....	Meta
173. Parry Charcoal Co.....	Box 134, St. James
174. Pringle Charcoal Co. ....	Route #1, Greenfield
175. Ridenhour Charcoal Co.....	Belle
176. Ripka Charcoal Co.....	Meta
177. Royal Oak Charcoal Co. ....	Route #2, Birchtree (Montier)
178. Skaggs, M. B.....	Kirbyville
179. S&S Charcoal Co.....	Box 151, Branson (Bradleyville)
180. Stegeman Charcoal Co. ....	Route #3, Jefferson City (Schubert)
181. Stockton, W. B.....	Belle
182. Sugar Creek Charcoal Co. ....	Meta
183. Tarvid Charcoal Co.....	Centerville (Corridon)
184. Timber Charcoal Co. ....	Gladden (Timber)
185. Timber Products, Inc. ....	Oakland Star Route, Lebanon
186. Trumac Charcoal Co. ....	Vienna (Lecoma)
187. Wallace, Aude.....	Longrun
188. Weed, D. J.....	Argyle
189. Werdehaus Charcoal Co.....	Box 157, Owensville
190. Wieburg Charcoal Co.....	Freeburg (Salem)
191. Wulff Charcoal Co.....	Vienna (Licking)

See footnotes page 25.

State, name, and producer No.

Post office address <sup>1</sup>

**CENTRAL (continued)**

Ohio

- 192. Cherokee Charcoal Co. .... P. O. Box 266, Oak Hill
- 193. Magic Star Charcoal Co.<sup>2</sup> ..... P. O. Box 14, New Lexington
- 194. Ohio Valley Charcoal ..... 1223 N. Columbus Street, Lancaster  
(Nelsonville)
- 195. Roseville Charcoal & Mfg..... P. O. Box 1188, Zanesville (Byesville)
- 196. Tri-State Charcoal Co. .... Route #3, Oak Hill
- 197. Victory Charcoal Co..... Box 116, Oak Hill

**SOUTHERN**

Alabama:

- 198. Bazzell, M. C. .... Route #2, Box 440, Deatsville
- 199. Bentley, John L. .... BOX 133, Rockford
- 200. Boggs, Alvin..... Route #2, Delta
- 201. Coosa Charcoal Co., Inc.<sup>2</sup>..... P. O. Box 73, Rockford
- 202. Fancher, Wiley<sup>2</sup> ..... Route #1, Sardis
- 203. W. A. Belcher Lumber Co..... Box 1831, Birmingham (Simmsville)
- 204. Wakefield Products Co..... Russellville (Fairview)

Arkansas:

- 205. Arkansas Charcoal Co.<sup>2</sup>..... Paris
- 206. Baron Charcoal Co.<sup>2</sup>..... Route #2, Vian, Okla. (Gentry)
- 207. Bruner Ivory Handle Co..... P. O. Box 38, Hope
- 208. Bull Mt. Charcoal Enterprise..... Route A, Flippin
- 209. Crosset Chemical Co.<sup>2</sup> ..... P. O. Box 271, Crossett
- 210. Hickory Ridge Charcoal..... P. O. Box 16, Kingston
- 211. K-V Charcoal Co., Inc..... P. O. Box 26, Lewisville
- 212. Martin, Ray & Son..... Mountain Home
- 213. Ozark Charcoal Co..... Ozark
- 214. Ozark Enterprise Charcoal ..... Gassville
- 215. Polk County Enterprises, Inc..... Mena (Hatfield)
- 216. Promised Land Charcoal Co. .... Route #1, Mountain Home
- 217. Tac Enterprises, Inc. .... Mountain Home (Oakland)

Louisiana:

- 218. Home Charcoal Co., Inc.<sup>2 4</sup> ..... P. O. Box 814, Alexandria

Mississippi:

- 219. Attala Land & Wood Products Co. .... Kosciusko
- 220. Black Creek Charcoal Co. <sup>2</sup> ..... Route #5, Lexington
- 221. Blackjack Charcoal Co..... P. O. Box 344, Bruce
- 222. Dixie Farms..... Satartia
- 223. Dizzy Dean Enterprises, Inc.<sup>2 5</sup> ..... Pachuta
- 224. Eaton & Clark..... Box 84, Taylorsville
- 225. Prince Lumber Co..... Shugulak

Oklahoma :

- 226. Alabama Charcoal Co. .... Route #2, Westville (Baron)
- 227. Carter Charcoal & Carbon Co. .... Box 269, Coalgate (Village of Phillips)
- 228. Conley, Floyd ..... Box 411, Marble City
- 229. Flying 13 Ranch ..... Vian
- 230. Kirkland, O. D..... Route #2, Coalgate
- 231. Robertson, Eli ..... Route #1, Gore

See footnotes page 25.

**State, name, and producer No.**

**Post office address<sup>1</sup>**

**SOUTHERN (continued)**

Oklahoma (con't.):

232. Transit Corp ..... 1516 Liberty Bank Bldg. Oklahoma City  
(Sallisaw)  
233. Western Barbecue Supply Co., Inc.<sup>2</sup>... Box 111, Sallisaw

Tennessee:

234. Anderson, Paul ..... Box 537, Jamestown  
235. Baker, Delbert ..... Spencer  
236. Bouldin, Noble ..... Spencer  
237. Bowman, Leslie ..... Route #3, Monterey  
238. Brock, Lewis ..... Mountain Route, Spencer  
239. Brown, Carson ..... Route #5, Crossville (Linary)  
240. Forest Products Chemical Co.<sup>2</sup> ..... Box 6745, Hollywood Station, 2753  
Chelsea Avenue, Memphis  
241. Garrison, V. D. .... Route #1, Crossville  
242. Geer, Luther ..... Mountain Route, Spencer  
243. Green, William ..... Route #1, Bloomington Springs  
244. Harp, Charlie ..... Route #6, Cookeville  
245. Hassler, Virgil ..... Route #5, Crossville  
246. Hedgecough, Orb ..... Route #2, Baxter (Nash Community)  
247. Hicks, Horace ..... Route #1, Clarkrange  
248. Houston, John ..... Route #5, Box 233, Crossville (Binary)  
249. Jack Daniel Distributors.. ..... Lynchburg  
250. Karch, Al ..... 102 Hoyt Street, Monterey (Cliff Springs)  
251. Kerley, Albert ..... Route #5, Crossville  
252. Kerley, Carl ..... Route #5, Crossville  
253. Kerr, W. F. ....<sup>2</sup> Spencer  
254. Lewis, Herman <sup>2</sup> <sup>5</sup> ..... 3813 Nathaniel Road, Knoxville (Hunts-  
ville)  
255. Looper, Austin ..... Route #3, Monterey  
256. Looper, Homer ..... Monterey  
257. Martin, Elmer ..... Mountain Route, Spencer  
258. Mitchell's Charcoal Co. .... Route #5, Cookeville  
259. Mooneyham, David ..... Route #1, Spencer  
260. Morgan, Gene ..... Monterey  
261. Nash, Armon ..... Route #2, Baxter  
262. Orurstrect, Willard ..... Monterey  
263. Prater, Denton ..... Route #7, Sparta  
264. Reed, Culbert ..... Route #1, Box 118, Crawford  
265. Rittenberry, John ..... Route #1, Cookeville  
266. Romines, Dolphus ..... Route #6, Cookeville  
267. Scott, William ..... Spencer  
268. Simmons, Arthur ..... Route #1, Spencer  
269. Smith, Robert ..... Route #1, Clarkrange  
270. Smith, W. A. .... Route #5, Box 386, Crossville (Stephens  
Gap)  
271. Sullivan, Alton ..... Spencer  
272. Swallows, Kernel ..... Route #3, Monterey  
273. Tennessee Handle Co. .... Cookeville  
274. Tennessee Products & Chemical  
Corp. <sup>2</sup> ..... 2611, West End Avenue Nashville,  
(Lyles- Wrigley)  
275. Tinch, M. T. .... Mayland  
276. Walleer, Edward ..... Route #5, Crossville  
277. Walker, James ..... Route #5, Crossville (Linary)  
278. Whitaker, Charles J. .... Route #3, Monterey

See footnotes page 25.

**State, name, and producer No.**

**Post office address<sup>1</sup>**

**SOUTHERN (continued)**

Texas:

279. B. & B. Charcoal Co.....	P. O. Box 314, Flatonia
280. Campfire Charcoal Co., Inc. <sup>2</sup> .....	Navasota
281. Craven, Wallace..... <sup>2</sup> .....	Route #1, Box 175, Roanoke
282. Forest Research Co. <sup>2</sup> .....	3810 Westheimer Road, Houston (College Station)
283. Lone Star Charcoal Co. <sup>2</sup> .....	P. O. Box 546, Quitman
284. Lone Star Charco <sup>6</sup> .....	P. O. Box 1551, Wells
285. McCombs Charcoal Co. ....	Pittsburg (Dukes Chapel Road)
286. Moore Charcoal Co. <sup>2</sup> .....	Route #10, Box 120, Tyler
287. National Charcoal Co. ....	P. O. Box 4123, San Antonio (Muldoon)
288. Smith, Derwood <sup>6</sup> .....	P. O. Box 1077, Wells

**OTHER WEST**

Arizona:

289. Charkete Products Co..... <sup>3</sup>	Redington
290. Tucson Tallow Co. <sup>3</sup> .....	2938 N. Fairview Road, Tucson

Kansas:

291. Chetopa Charcoal Co. <sup>2</sup> .....	Chetopa
292. Jayhawk Charcoal Co. <sup>2</sup> .....	Chetopa

Montana:

293. Big Bear, Inc. <sup>2</sup> .....	Pablo
--	-------

Oregon:

294. Jigg's Charcoal Co.....	Route #1, Cave Junction
------------------------------	-------------------------

Utah:

295. D. & C. Charcoal Co..... <sup>3</sup>	P. O. Box 727, Cedar City
296. Pyramid Charcoal Briquette Co. <sup>3</sup> .....	Cedar City

Washington:

297. Elbe Charcoal..... <sup>3</sup>	Box 334, Elbe
298. King County Charcoal, Inc. <sup>3</sup> .....	P. O. Box 524, Auburn

**CALIFORNIA**

California:

299. Alvarez, Frank .....	Route #1, Box 155, Atascadero
300. Bar-B-Glo Co.....	Tulare (Springfield)
301. Bergman, Louis .....	R.D. #1, Box 88, Paso Robles
302. Bidstrup, Walter .....	Eldorado
303. Busi, Jim.....	R.D. Box 173, Templeton
304. Calaveras Firewood Corp.....	Box 356, Murphys (Bear Mtn. Ranch)
305. California Charcoal Products .....	1121 National Avenue, National City (Santa Ysabel)
306. Chaides, Frank .....	1523 Pine Street, Paso Robles (Adelaide District)
307. Dunham, Marion and Charles Ritchie.	Route #1, Box 198, Templeton (Dover Canyon)
308. Flores, Juan C. ....	1109 Limekiln Road, Hollister
309. Fort Seward Hardwood Mfg. Co. <sup>2</sup> .....	Box 80, Fort Seward

See footnotes page 25.

State, name, and producer

Post office address<sup>1</sup>

**CALIFORNIA (continued)**

California (con't.):

310. Gates, Leroy .....	R.D. Route #1, Box 187, Templeton
311. Griswold, A. O. & Son .....	Route #2, Box 255, Springville
312. Galbreath, O. W. ....	Corbett Canyon Road, Arroyo Grande
313. Glenbrook Charcoal .....	Route #1, Box 196, Templeton (York Mtn. Road)
314. Guerero, Jose .....	Santa Margarita
315. Linder, Reynold .....	100 Oakmore, Tulare (Yokohl Valley)
316. Maduena, Juan .....	2630, Riverside Avenue, Paso Robles
317. McGee & Son .....	Star Route, Orosi
318. Walker, Everett E. ....	Route #1, Box 197-B, Paso Robles

<sup>1</sup>Towns in parenthesis show plant location.

<sup>2</sup>Manufactures briquettes.

<sup>3</sup>Idle in 1961.

<sup>4</sup>Did not report 1961 production.

<sup>5</sup>New in 1962.

<sup>6</sup>Plant operated in 1961, but individual plant data unavailable.

## BRIQUETTE PRODUCERS IN THE UNITED STATES, 1961

(This list may not include all producers and is subject to change as plants are sold or moved and as new plants are constructed.)

### State, name, and producer No.

### Post office address<sup>1</sup>

#### NORTHEAST

##### Connecticut:

1. Park, B. Ripley ..... North Stonington

##### Maine:

2. Jaeger Co. .... P. O. Box 429, 56 Sweden Street Caribou (Fort Kent)

##### Pennsylvania:

3. Humphrey Charcoal Corp. .... P. O. Box 45, Brookville (Fort Barnett)  
4. Indian Hill Charcoal Co. .... Laceyville

##### West Virginia:

5. Roseville Charcoal & Mfg. Co. .... Box 1188, Zanesville, Ohio (Bentree and Swiss)

#### SOUTHEAST

##### Florida:

6. Industrial Carbon Division, Cabot Corp. .... P. O. Box 137, Gainesville  
7. Pioneer Charcoal Co. .... Box 777, Dunnellon

##### Georgia:

8. Rome Charcoal Co., Inc. .... P. O. Box 2233, W. 14th Street, Rome

##### North Carolina:

9. Black Panther Insecticide Co. .... Box 690, Bragg Street, Sanford  
10. Standard Milling Co. .... Riverside Drive, Asheville

##### South Carolina:

11. T. S. Ragsdale Co., Inc. .... P. O. Box 38, Lake City

##### Virginia:

12. Imperial Briquet Corp. .... Kenbridge  
13. Larus & Bros. Co., Inc. .... 22nd & Cary Streets, Richmond

#### LAKE

##### Michigan:

14. Cliffs Dow Chemical Co. .... Wright Street, Marquette  
15. Kingsford Chemical Co. .... Iron Mountain (Kingsford)

##### Minnesota:

16. Rum River Charcoal Co. .... Isanti

##### Wisconsin:

17. Berwind Fuel Co. .... Box 173, Waupaca

See footnotes page 28.

State, name, and producer No.

Post office address<sup>1</sup>

**CENTRAL**

Missouri:

- 18. Cupples Co . . . . . 7800 Bohomme, St. Louis (Salem)
- 19. Galena Charcoal Products, Co. . . . . Galena
- 20. Keeter Charcoal Co., Inc . . . . . Box 653, Branson
- 21. Kingsford Co. . . . . P. O. Box 1033, Louisville, Ky. (Belle)
- 22. Osage Charcoal & Chemical Co., Inc. . . . . 400 E. Carrie Street, St. Louis (Meta)
- 23. Standard Milling Co., Charcoal Fuel  
Division . . . . . Kansas City (Meta)

Ohio:

- 24. Magic Star Charcoal Co. . . . . P. O. Box 14, New Lexington

**SOUTHERN**

Alabama :

- 25. Coosa Charcoal Co., Inc. . . . . P. O. Box 73, Rockford
- 26. Fancher, Wiley . . . . . Route #1, Sardis

Arkansas :

- 27. Arkansas Charcoal Co. . . . . Paris
- 28. Baron Charcoal Co. . . . . Route #2, Vian, Okla. (Gentry)
- 29. Crossett Chemical Co. . . . . P. O. Box 271, Crossett

Louisiana:

- 30. Home Charcoal Co., Inc. . . . . P. O. Box 814, Alexandria

Mississippi:

- 31. Black Creek Charcoal Co. . . . . Route #5, Lexington
- 32. Dizzy Dean Enterprises, Inc.2 . . . . . Pachuta

Oklahoma :

- 33. Western Barbecue Supply Co., Inc. . . . . Box 111, Sallisaw

Tennessee:

- 34. Forest Products Chemical Co. . . . . Box 6745, Hollywood Station, 2753  
Chelsea Avenue, Memphis
- 35. Hickory Charcoal Co., Inc.2 . . . . . 2519 Cherry, NE, Knoxville
- 36. Lewis, Herman. . . . . 3813 Nathaniel Road, Knoxville (Hunts-  
ville)
- 37. Plateau, Inc. . . . . P. O. Box 441, Cookeville
- 38. Tennessee Products and Chemical  
Corp. . . . . 2611 West End Avenue, Nashville  
(Lyles- Wrigley)

Texas:

- 39. Campfire Charcoal Co., Inc. . . . . Navasota
- 40. Forest Research Co. . . . . 3810 Westheimer Road, Houston (Col-  
lege Station)
- 41. Goebel Charcoal Co. . . . . 111- 113 W. 2nd Street, Smithville (Mul-  
doon)
- 42. Lone Star Charcoal Co. . . . . P. O. Box 546, Quitman
- 43. Moore Charcoal Co . . . . . Route #10, Box 120, Tyler
- 44. Patio Party Products, Inc. . . . . P. O. Box 142, Marshall

See footnotes page 28.

**State, name, and producer No.**

**Post office address<sup>1</sup>**

OTHER WEST

Kansas:

- 45. Chetopa Charcoal Co..... Chetopa
- 46. Jayhawk Charcoal Co..... Chetopa

Montana :

- 47. Big Bear, Inc. .... Pablo

Washington:

- 48. Western Charcoal Corp. .... 2423 1st Street, Seattle (Renton)

CALIFORNIA

California:

- 49. Charcoal Industries..... P. O. Box 182, Paso Robles (Adelaide Road)
- 50. Fort Seward Hardwood Mfg. Co. .... Box 80, Fort Seward

---

<sup>1</sup>Towns in parenthesis show plant location.

<sup>2</sup>New in 1962.

## **APPENDIX C**

Map 1--Charcoal Producers in the United States

Map 2--Charcoal Briquets Producers in the United States



U.S. DEPARTMENT OF AGRICULTURE  
 FOREST SERVICE  
 DIVISION OF FOREST ECONOMICS AND MARKETING RESEARCH  
 NOVEMBER 1962

**CHARCOAL PRODUCERS IN THE UNITED STATES**

